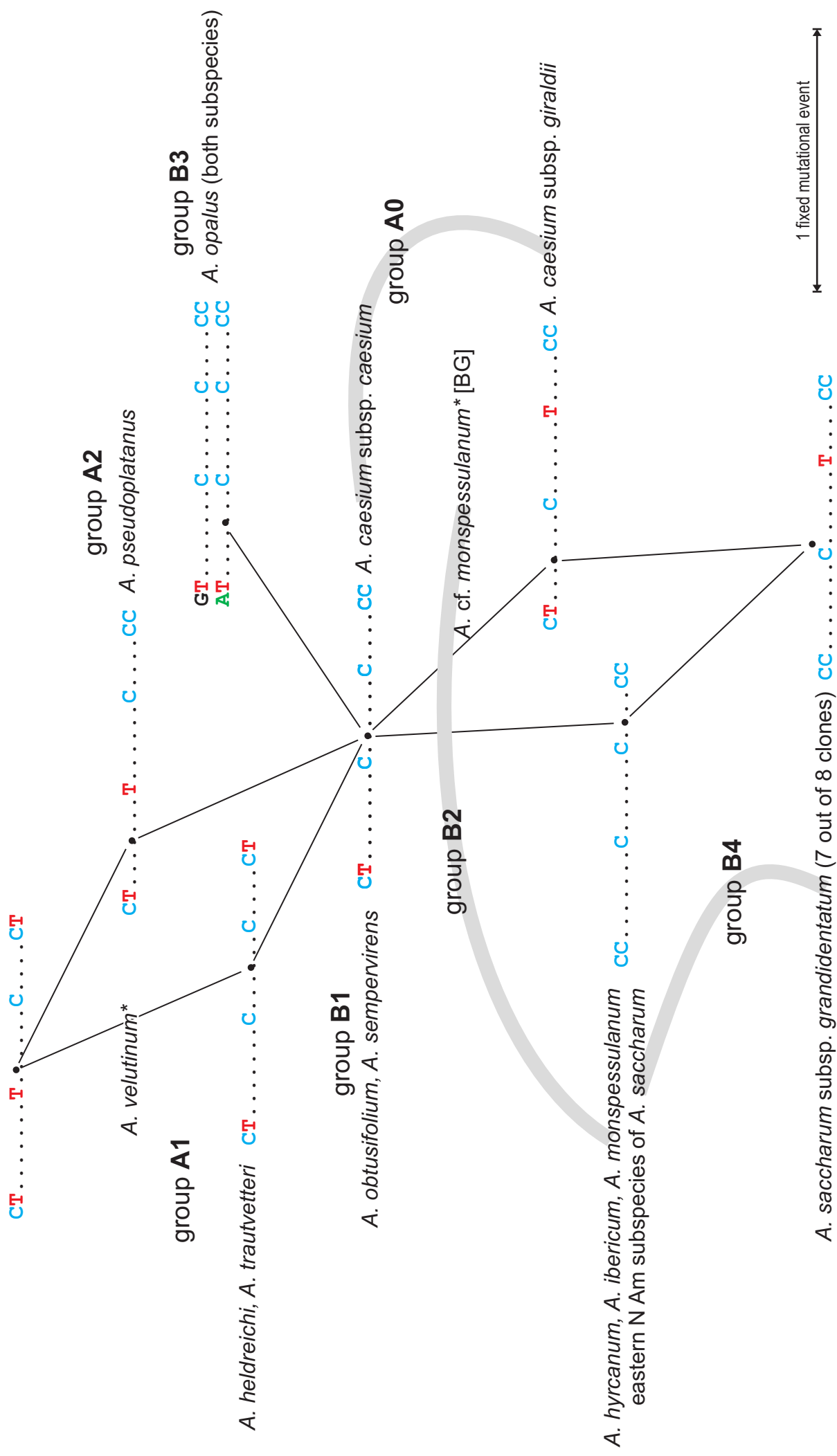
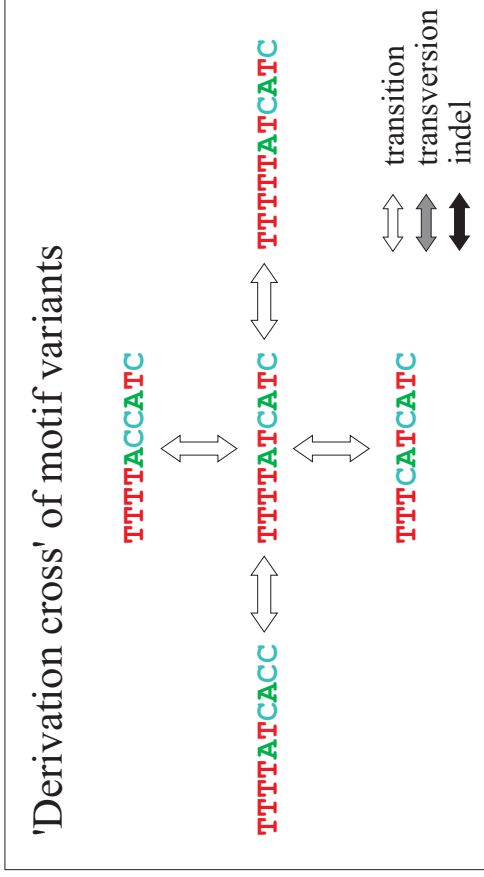


SV1 motif

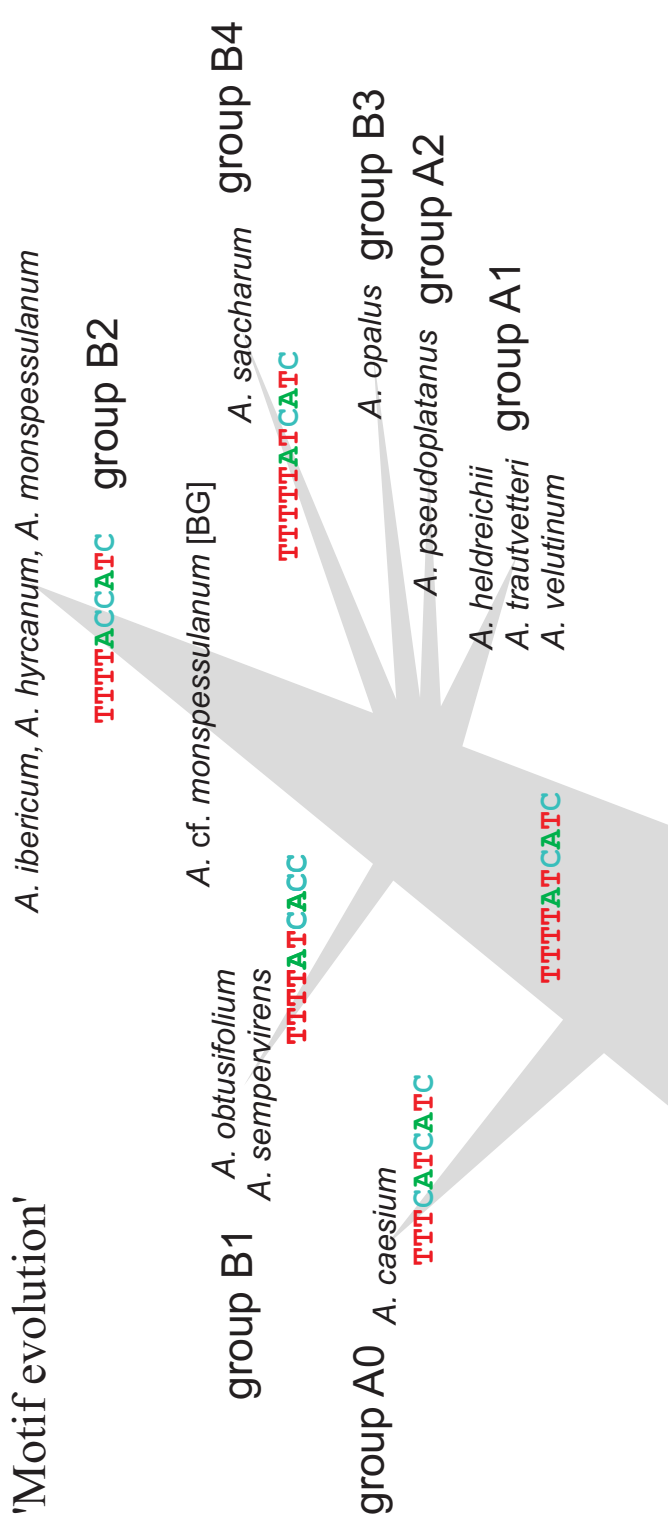


* Taxa placed along edges are polymorphic for this motif.

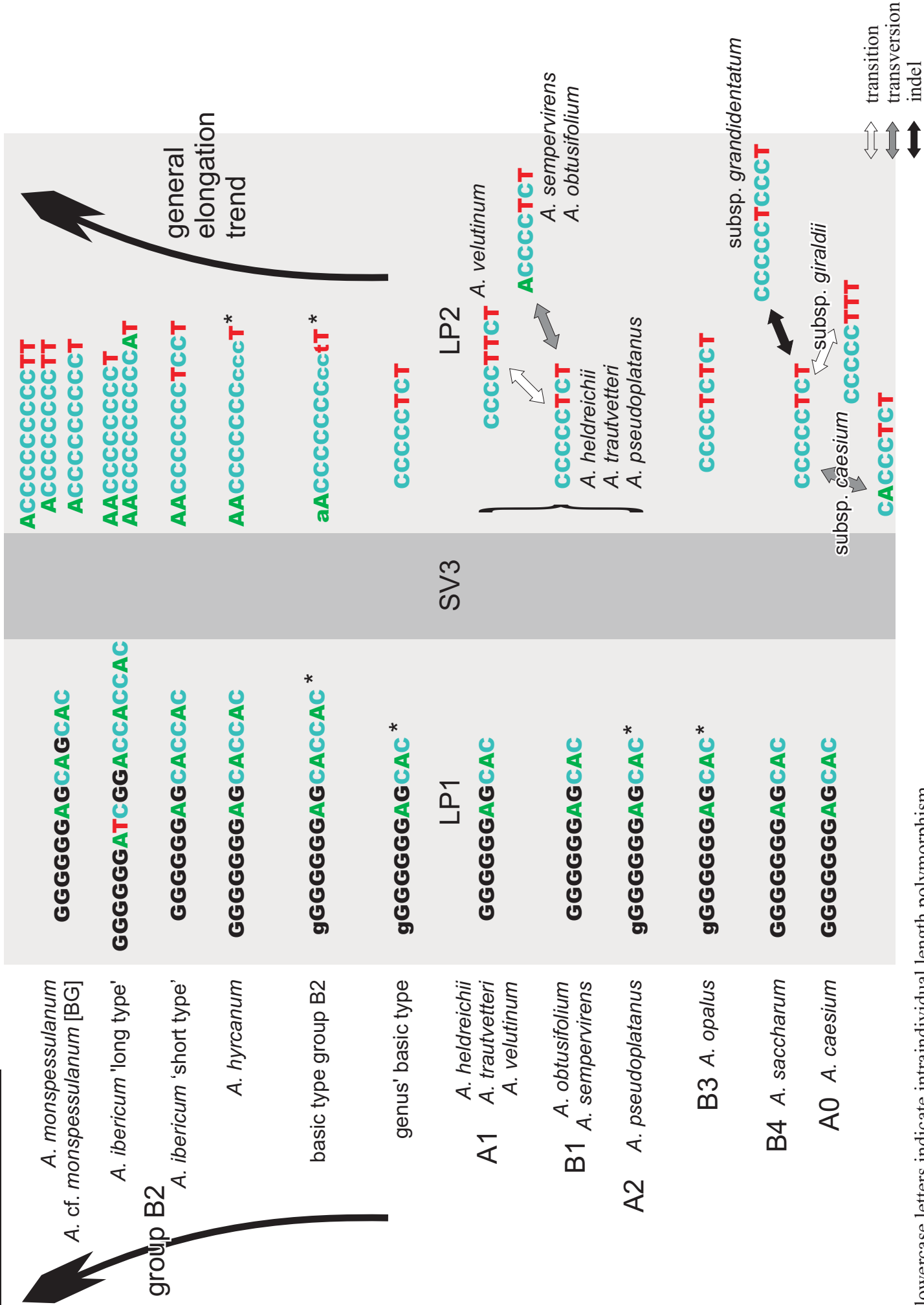
SV2 motif



'Motif evolution'

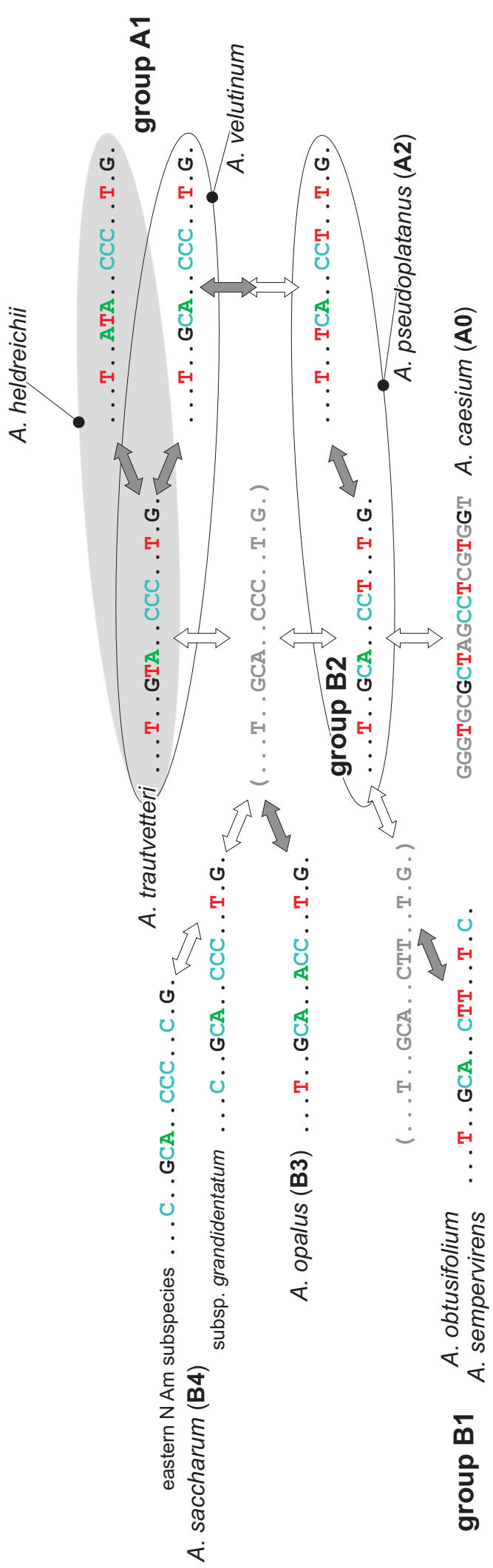


LP1+LP2 motives



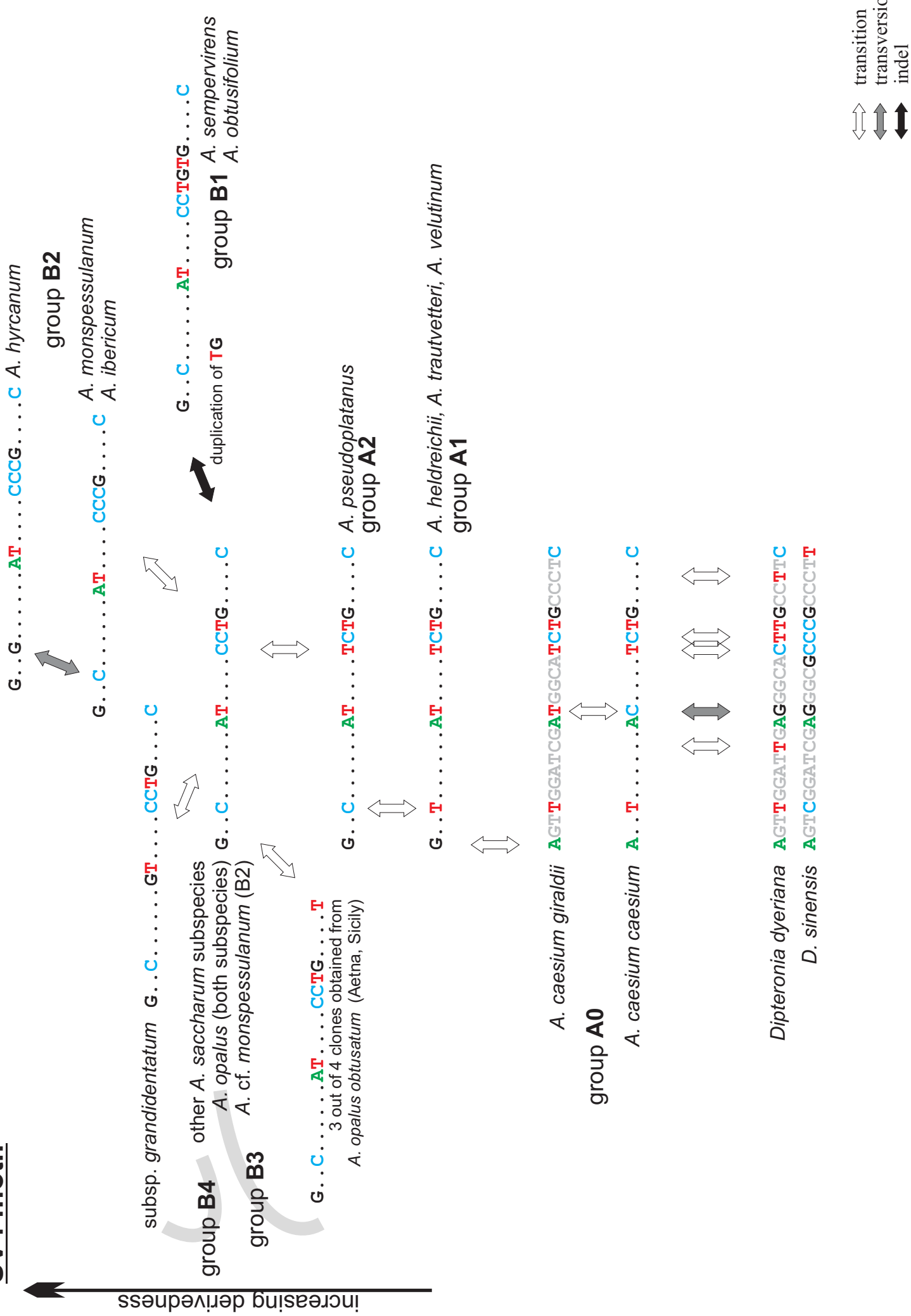
* lowercase letters indicate intraindividual length polymorphism

SV3 motif

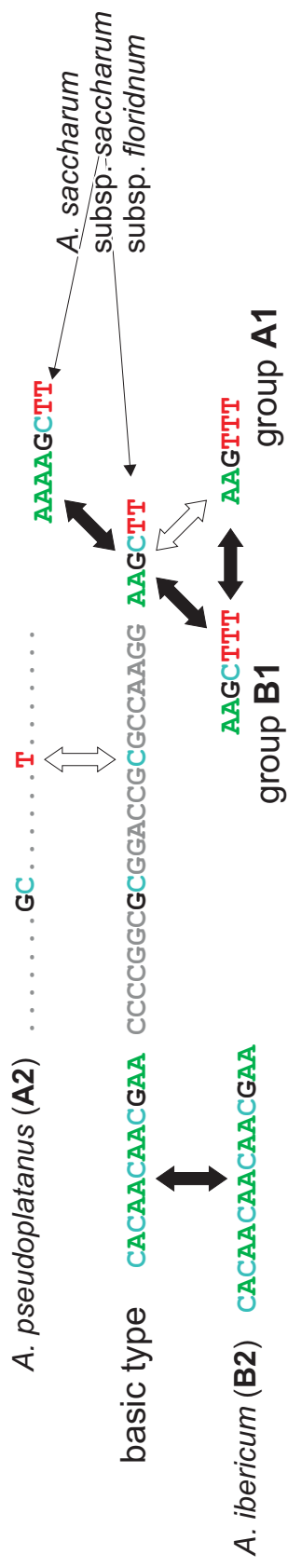


↔ transition
 ⇄ transversion
 ⇆ indel

SV4 motif

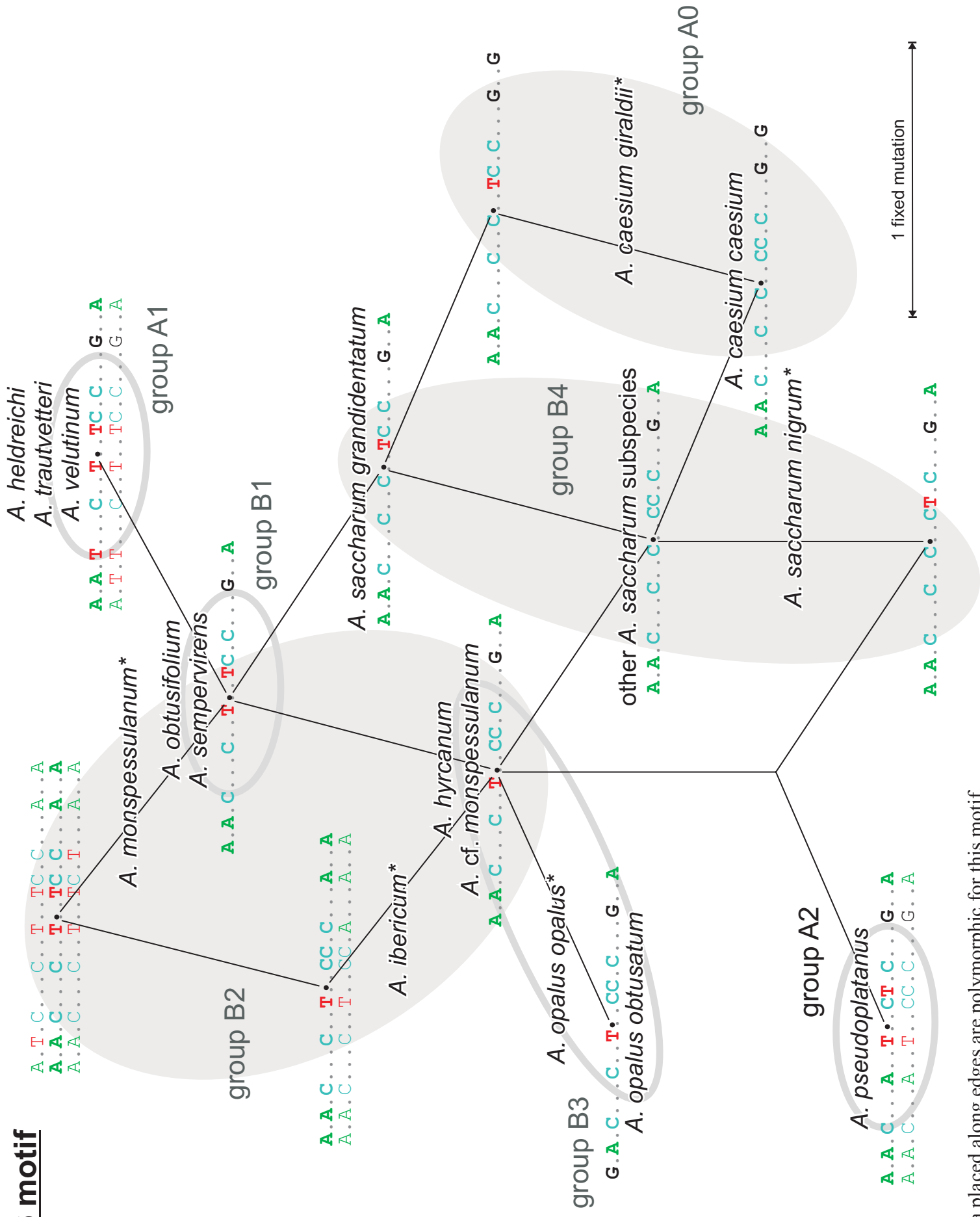


SV5 motif



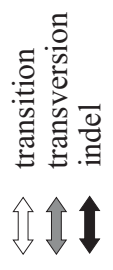
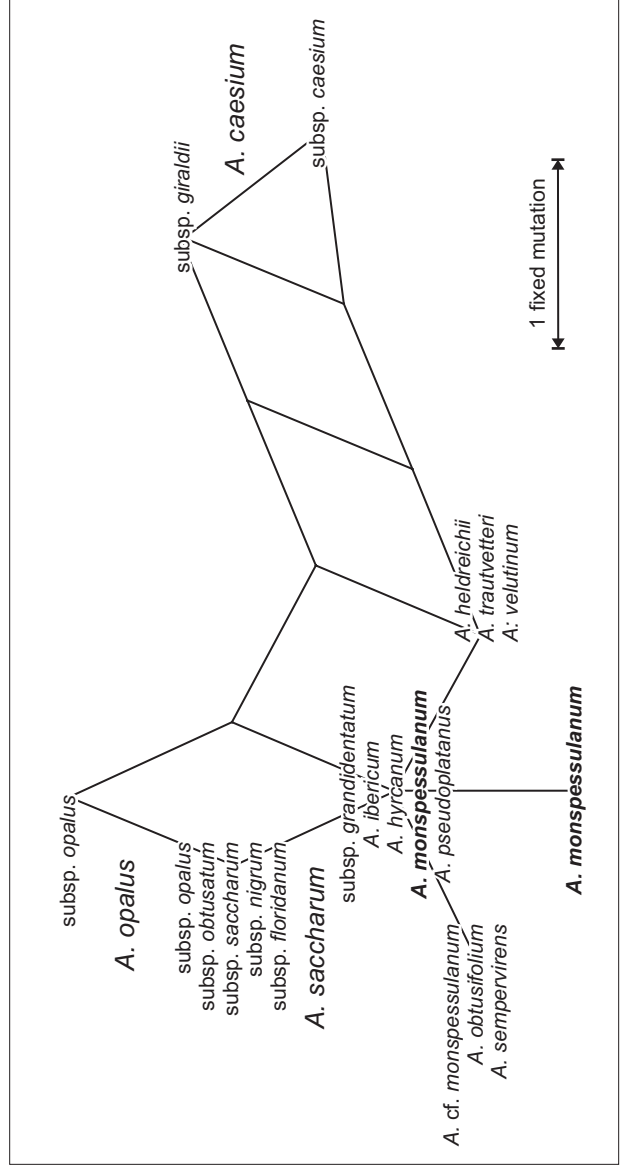
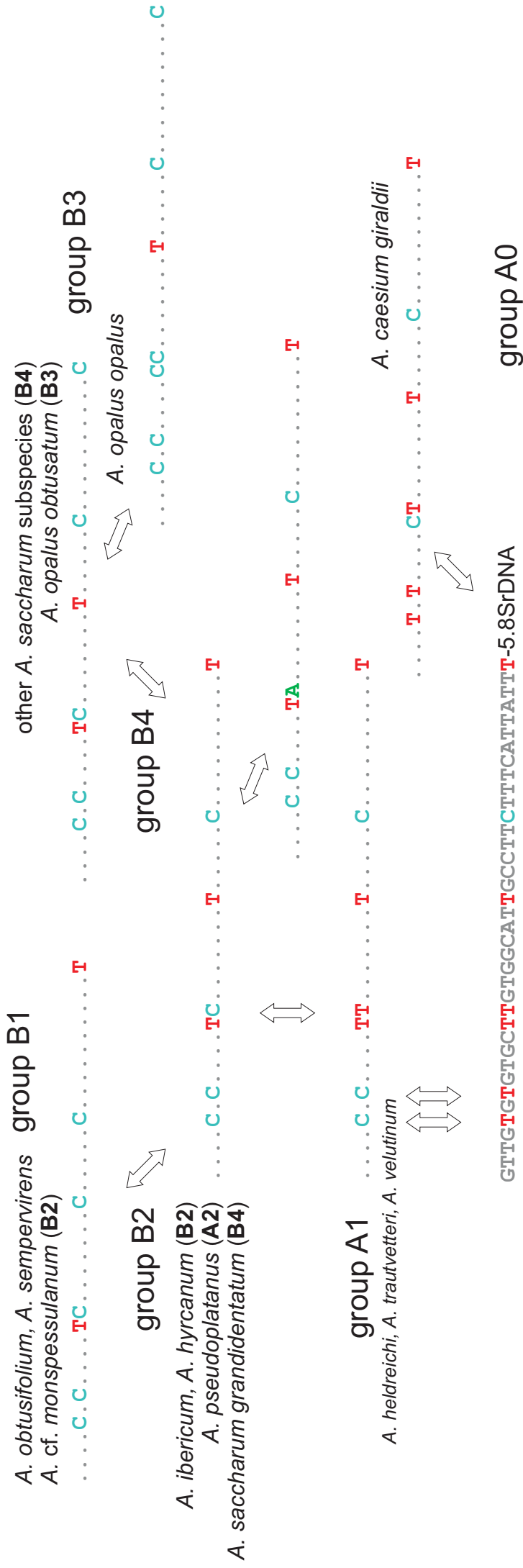
↔ transition
↔ transversion
↔ indel

SV6 motif



* Taxa placed along edges are polymorphic for this motif.

SV7 motif



SV8 motif

A. caesium (A0) CCG TGGG <6nt> C <13nt> GCC <8nt> C

basic type of all other taxa

unmodified in *A. obtusifolium*, *A. sempervirens* (B1)
A. cf. monspessulanum, *A. hyrcnum* (B2)
A. opalus (B3), and *A. saccharum* (B4)

A. heldreichii, *A. trautvetteri*, *A. velutinum* (A1)

A. pseudoplatanus (A2)*
in 3/38 clones
in 1/38 clones

* and a single *A. sempervirens* clone

A. monspessulanum (B2)


A. ibericum (B2)

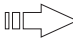


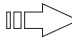
transition
transversion
indel

SV9 motif

A. heldreichii, *A. trautvetteri*, *A. velutinum* (**A1**) C...**TGT.GT**..G...**TG**..C.....**A**
A. monspessulanum (**B2**)

 *A. ibericum*, *A. hyrcanum* (**B2**) **A**...TGT.GT..G...TG..C.....**A**
A. cf. monspessulanum (**B2**)

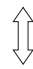


 *A. caesium* (**A0**) C...**CGT**.GT..G...TG..C.....**A**

 *A. opalus* (**B3**) C...TGT.**GC**..G...TG..C.....**A**

   *A. sempervirens*, *A. obtusifolium* (**B1**) C...TGT.**AC**..**A**..**CG**..C.....**A**

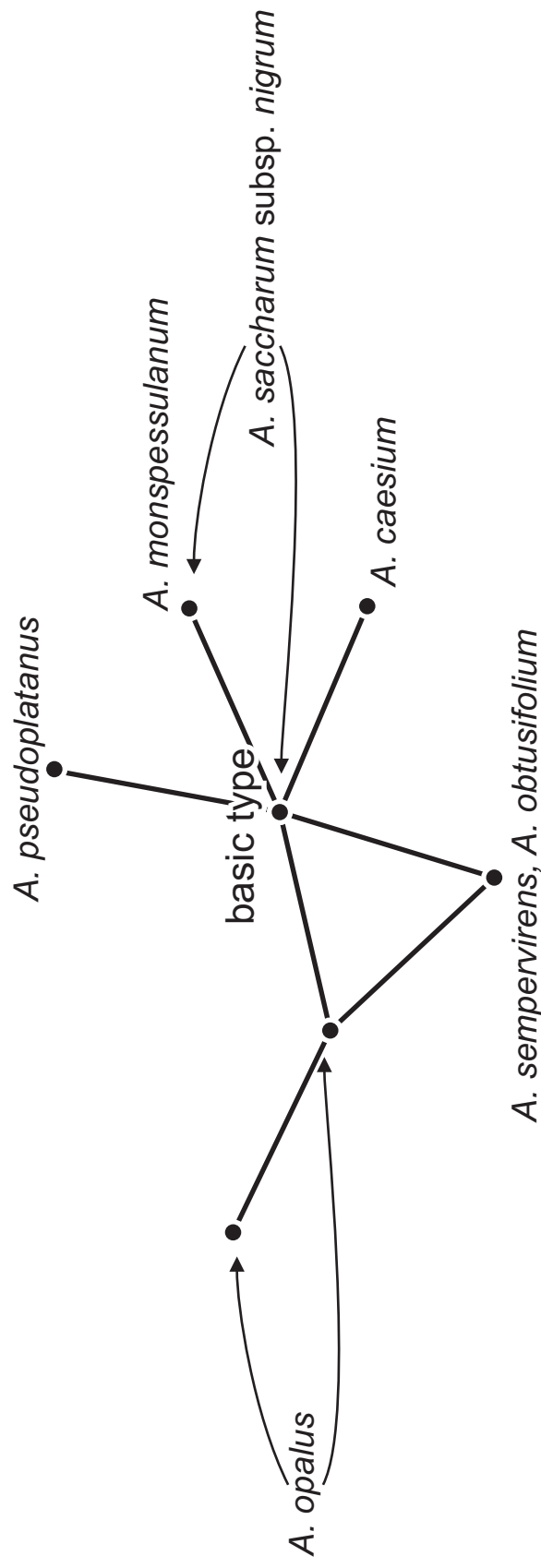
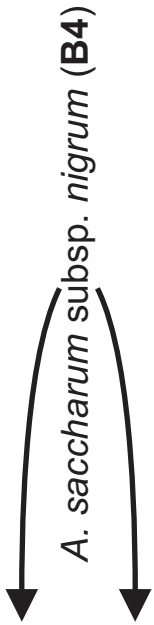
 *A. pseudoplatanus* (**A2**) C...TGT.GT..G...**TA**..C.....**A**

 *A. saccharum* (all subspecies, **B4**) C...TGT.GT..G...TG..C.....**G**

 transition
 transversion
 indel

SV10 motif

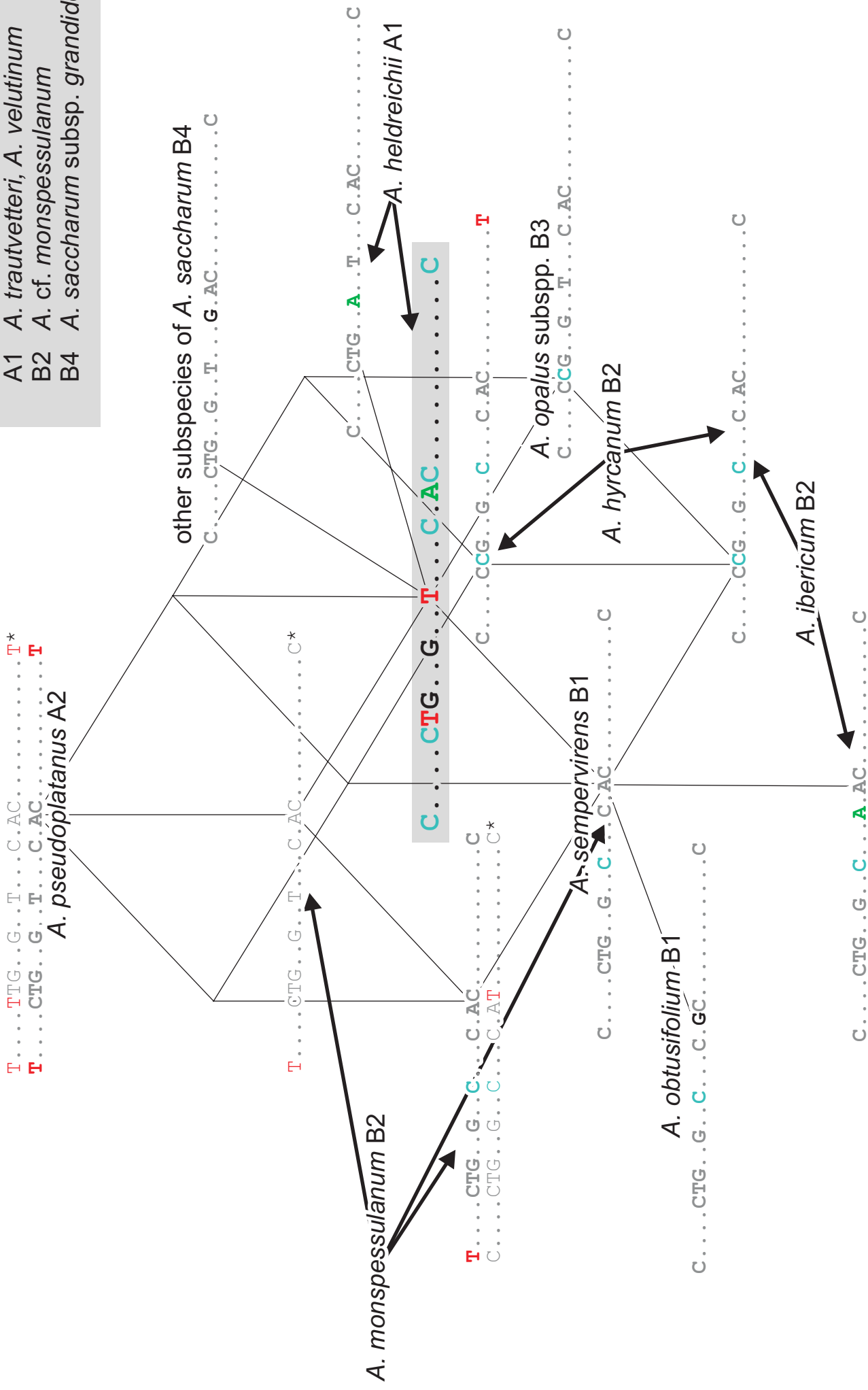
subspecies of <i>A. caesium</i> (A0)	AAA	C..CG.....C....GT	TAATAA
basic type all other taxa	AAA	C..CG.....C....GC	TAA TAA
<i>A. monspessulanum</i> (B2)	AAA	C..CA.....C....GC	TAATAA
<i>A. pseudoplatanus</i> (A2)	AAA	C..CG.....C....GC	TAATAA
<i>A. sempervirens</i> , <i>A. obtusifolium</i> (B1)	AAA	C..CG.....C....GC	TAA AAA
subspecies of <i>A. opalus</i> (B3)	AAA AAAA	C..CG.....C....GC C..CG.....C....GC	TAA TAA TAA TAA



SV11 motif

basic type found in ...

- A0 *A. caesium* subspecies
- A1 *A. trautvetteri*, *A. velutinum*
- B2 *A. cf. monspessulanum*
- B4 *A. saccharum* subsp. *grandidentatum*



1 fixed point mutation

* Motif variant obtained from a single individual or cloned ITS sequence of either *A. monspessulanum* or *A. pseudoplātanus*